



PORTFOLIO MANAGEMENT

Value-Added to Asset Management

The Portfolio Management tool enables good governance by promoting transparency of reliable data. It produces portfolio inventories in 2D and 3D. For financial reporting, this tool brings a standardized and continuous portfolio management inventory of spaces with accurate square footage.

Smart Property Management

Since 1995, Archidata offers a web solution for real estate managers. The plans archived on the Archidata platform are leveraged by extracting the information needed for space management and making it accessible rapidly and securely.

Reliable information when you need it

The Archidata Solution integrates with existing management systems. It is a global solution that follows the life cycle of a building. Our platform offers a set of tools for three sectors of activities: assets, operations and projects. Many tools are offered to provide reliable information for all real estate activities.

UNITED STATES OF AMERICA

Toll-free: 1-855-870-1770
NEW YORK (Head Office)
 641 Lexington Avenue,
 14th floor, New York,
 NY 10022, USA
 T. +212-634-6408
 F. +212-634-6409

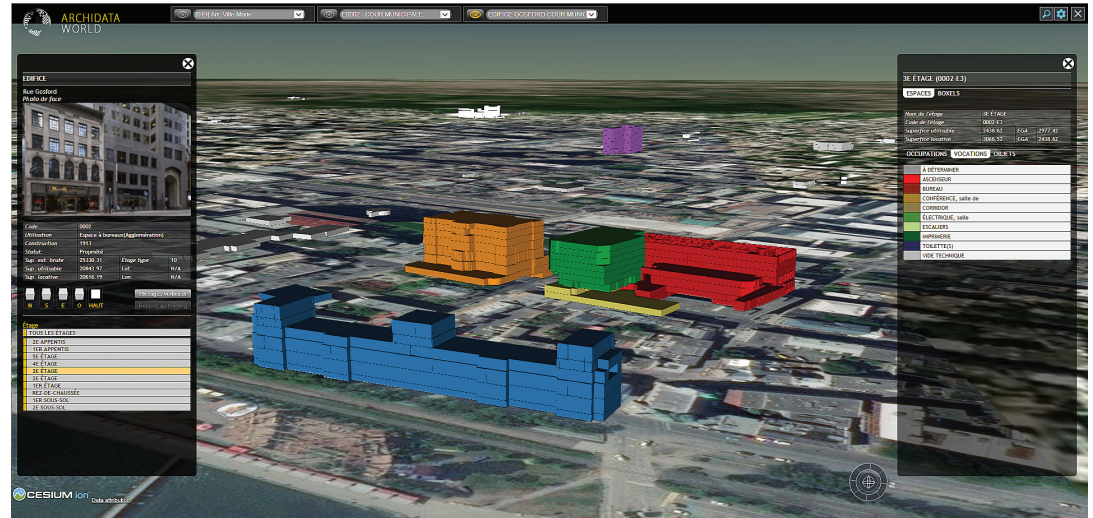
PLATTSBURGH
 48 Spellman Street
 Plattsburgh, NY 12901, USA
 T. +518-825-0166

CANADA

Toll-free: 1-866-870-1770
MONTREAL (Head Office)
 333 Notre-Dame Street East,
 # 108, Montreal, Quebec,
 Canada H2Y 3Z2
 T. +514-876-1770
 F. +514-876-4509

TORONTO
 1 Yonge Street, # 1801
 Toronto, Ontario, Canada
 M5E 1W7
 T. +416-214-7829
 F. +416-369-0515

archidata.com

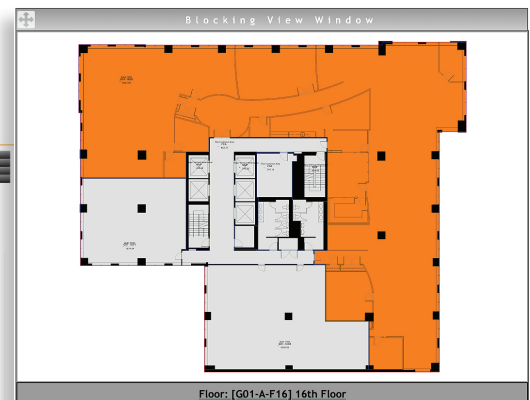
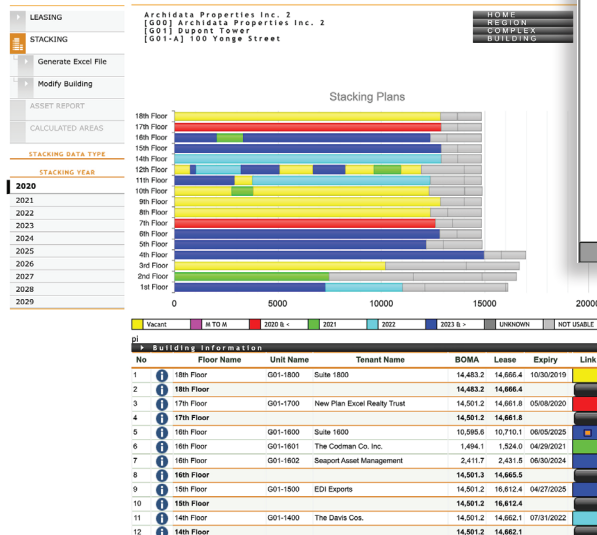


Portfolio in 3D can be viewed on any mapping platform (Geo3D) ▲

BENEFITS

- Increases market value of portfolio
- Shorter due diligence during real estate transactions
- Produces secured and reliable data to promote good governance
- Optimizes space management by reclaiming the building data
- Reduces operational costs by providing a user interface compatible with existing systems (EDM, ERP and IWMS)
- Transfers plans, documents and management data to potential buyers

Color-coded stacking plan ▼



Color-coded blocking occupancy plan view ▲