



# SPACE MANAGEMENT

Optimized and Ongoing Management of Surface Areas

The Space Management tool displays spaces of different types such as floors, rooms, administrative units and workstations. It produces drawings in either 2D or 3D and ensures accurate information by updating the data after each project or move. It also automatically manages and generates reports on square footage according to the client's measurement standards.

## BENEFITS

- Optimizes management and allocation of spaces
- Communicates reliable information between systems
- Reduces the need for licenses
- Saves time in the preparation of surface area, occupancy and usage reports
- Reduces cost to update alphanumerical maintenance and security systems
- Raises the productivity of technical staff

## Smart Property Management

Since 1995, Archidata offers a web solution for real estate managers. The plans archived on the Archidata platform are leveraged by extracting the information needed for space management and making it accessible rapidly and securely.

## Reliable information when you need it

The Archidata Solution integrates with existing management systems. It is a global solution that follows the life cycle of a building. Our platform offers a set of tools for three sectors of activities: assets, operations and projects. Many tools are offered to provide reliable information for all real estate activities.

## UNITED STATES OF AMERICA

Toll-free: 1-855-870-1770

### NEW YORK (Head Office)

641 Lexington Avenue,  
14<sup>th</sup> floor, New York,  
NY 10022, USA  
T. +212-634-6408  
F. +212-634-6409

### PLATTSBURGH

48 Spellman Street  
Plattsburgh, NY 12901, USA  
T. +518-825-0166

## CANADA

Toll-free: 1-866-870-1770

### MONTREAL (Head Office)

333 Notre-Dame Street East,  
# 108, Montreal, Quebec,  
Canada H2Y 3Z2  
T. +514-876-1770  
F. +514-876-4509

### TORONTO

1 Yonge Street, # 1801  
Toronto, Ontario, Canada  
M5E 1W7  
T. +416-214-7829  
F. +416-369-0515

archidata.com

## STANDARD METHODS OF MEASUREMENTS

BOMA OFFICE 80, 96, 2010, commercial, retail, residential  
EGA / CGA (Exterior Gross Area, Construction Gross Area)  
IPMS (International Property Management Standard)

## HEALTH/EDUCATION NORMS

CAN/CSA-Z317.11-02  
SILC / SILU

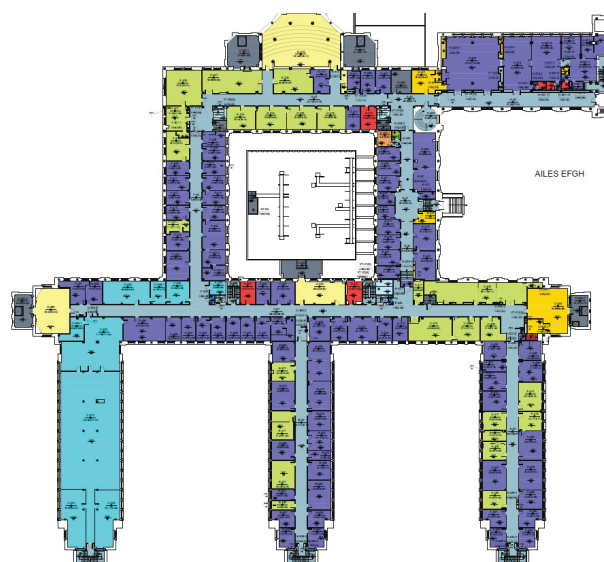
## Color-coded stacking occupancy cross-section view



## 3D view of Complex



## Color-coded blocking occupancy plan view



## Specs sheet plan view

