

## Centralized Project Management Linked to Spaces

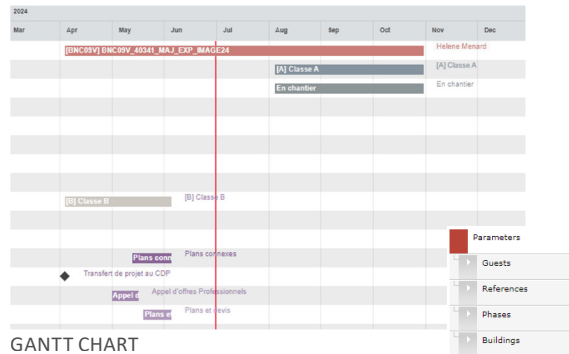
The Project Management Module provides a detailed monitoring dashboard where users can create and manage projects. It includes an automated system for approving documents and sending emails between project stakeholders, timeline and budget views, as well as a system for associating signatures and budgetary authorizations to enable rapid and simplified monitoring.

In addition to bid monitoring, various reports can be generated at any step of a project including Gantt charts, budget, dates and costs (per square feet).

The Project Management module is therefore interconnected and perfectly integrated to the Archidata ecosystem and highly relevant to financial planners, allowing clear vision and estimates of the costs associated with projects as well as their evolution in time.

### BENEFITS

- Centralized access window for all projects
- Better visualization of project costs
- Optimization of financial planning
- Optimization of exchanges between stakeholders and managers through communications system and automated status updating
- Optimization of available information on a project
- Extraction of reports and Gantt charts in various forms



No	Region	Building	Project code	Title	Description	Class	Status	Address	City	Owner
1	900	1307-1	SKT00A	SKT00A_13071_MN_ELE_ST-QUENTIN	Cible de réduction de 25%	A	2	245 rue Canada	St-Quentin	1304-1 Succursale
2	900	8558-1	MSP000	MSP000_85581_MN_ELE_MDECHAMPT	Cible de réduction de 25%	A	2	102-605 Street	Montréal	8558-1 MSP Saint
3	900	1138-1	LF56AZ	LF56AZ24-11381_MN_ELE	Rearrangement de deux unités Vieillesant au R22	D	6	201, 960, Cote	Laval	1138-1 Succursale (propriété)
4	900	0805-1	I2500K	I2500K_04871_MAJ_ELE_ESG	Cible réduction de 25%	A	4	425, ch. Princip	Cap-aux-Meules	5487-1 EXPLOIT PROJETES COMME
5	900		BNOC04	BNOC04_54871_MAJ_ELE_ESG	BNOC04	A	2	800 rue Saint	Montréal	5487-1 EXPLOIT PROJETES COMME
6	900	0273-1	BA3006	BA3006_02731_MAJ_REA	0273-1 Réaménagement	B	1	180, boul. Sir Wilfrid	Bécancour	0273-1 Succursale
7	900	1246-1	SXT004	SXT004_12461_MAJ_TEMP03_Dhyssagan	1246-1 Relec. temporaire	D	1			1246-1 Succursale
8	900	7321-1	W3E001	W3E001_51701_MAJ_OUV_Waterloo	Cocoonage avec FBN	C	1	85 Wills Way, unit	Waterloo	5170-1 STRATEG H2025 COURBEO (REV)
9	900	7326-1	CFP000	CFP000_73261_MAJ_REA_Chatham	Réaffectation FBN Chatham	B	2	380, St. Clair St.	Chatham	7326-1 Branch
10	000	8837-1	BNOC0BY	BNOC0BY_40341_MN_Deploiement team room	Deployment de salle AVI dans 25 succursales élig.	A	1	800, Rue St-Jacques	Montréal	4034-1 et 4035-1 Particules
11	900	1484-1	SD9009	SD9009_14841_MAJ_REL_SiCharlesBellevue	Recatégorisation 14841 SiCharles Bellevue	D	1	2774, av. Royale	St-Charles-de-Bellevue	Philippe McCormack
12	000	8837-1	BNOC0C	BNOC0C_80591_MAJ_GMS	LOT de projet GMS 2024	B	1	700 De La	Montréal	8025-1 Guichet Horp s/n Québec
13	900	0405-1	A1500M	A1500M_04051_MN_EXP_ACTONNALE	Rénovation de la toiture	A	2	1056, rue St-André	Acton Vale	0405-1 Succursale
14	900	0069-1	R25014	R25014_00691_EXP_FUS_LeGardeur	Fusion 0069-1 LeGardeur	C	2	333, Brian, suite 10	Repentigny	0069-1 Succursale
15	900	0428-1	V5900P	V5900P_04281_EXP_FUS_Dorion	Fusion 0428-1 Vaudreuil-Dorion	C	2	378, boul. Harewood	Vaudreuil-Dorion	0428-1 Succursale
16	900	1224-1	L1931V	L1931V_12241_EXP_FUS_Lévis	Fusion 1224-1 Lévis	C	2	1550, boulevard	Lévis	1224-1 Succursale
17	900	0283-1	B55000	B55000_02831_EXP_FUS_Beauveville	Fusion 0283-1 Beauveville	C	2	800, boul. Renaud,	Beauveville	0283-1 Succursale
18	900	0069-1	M160LO	M160LO_00691_EXP_FUS_Prenovacher (MT)	Fusion 0069-1 Prenovacher (MT)	C	2	8720, boul.	St-Léonard	0069-1 Succursale
19	900	1263-1	P5300B	P5300B_12631_EXP_FUS_PetitRocher	Fusion 1263-1 PetitRocher	C	2	587, rue Principale	Petit-Rocher	1263-1 Succursale
20	900	1080-1	M160LN	M160LN_10801_EXP_FUS_Chabanel	Fusion 1080-1 Chabanel (MT)	C	2	555, rue Chabanel	Montréal	1080-1 Succursale

PROJECT MANAGEMENT DASHBOARD